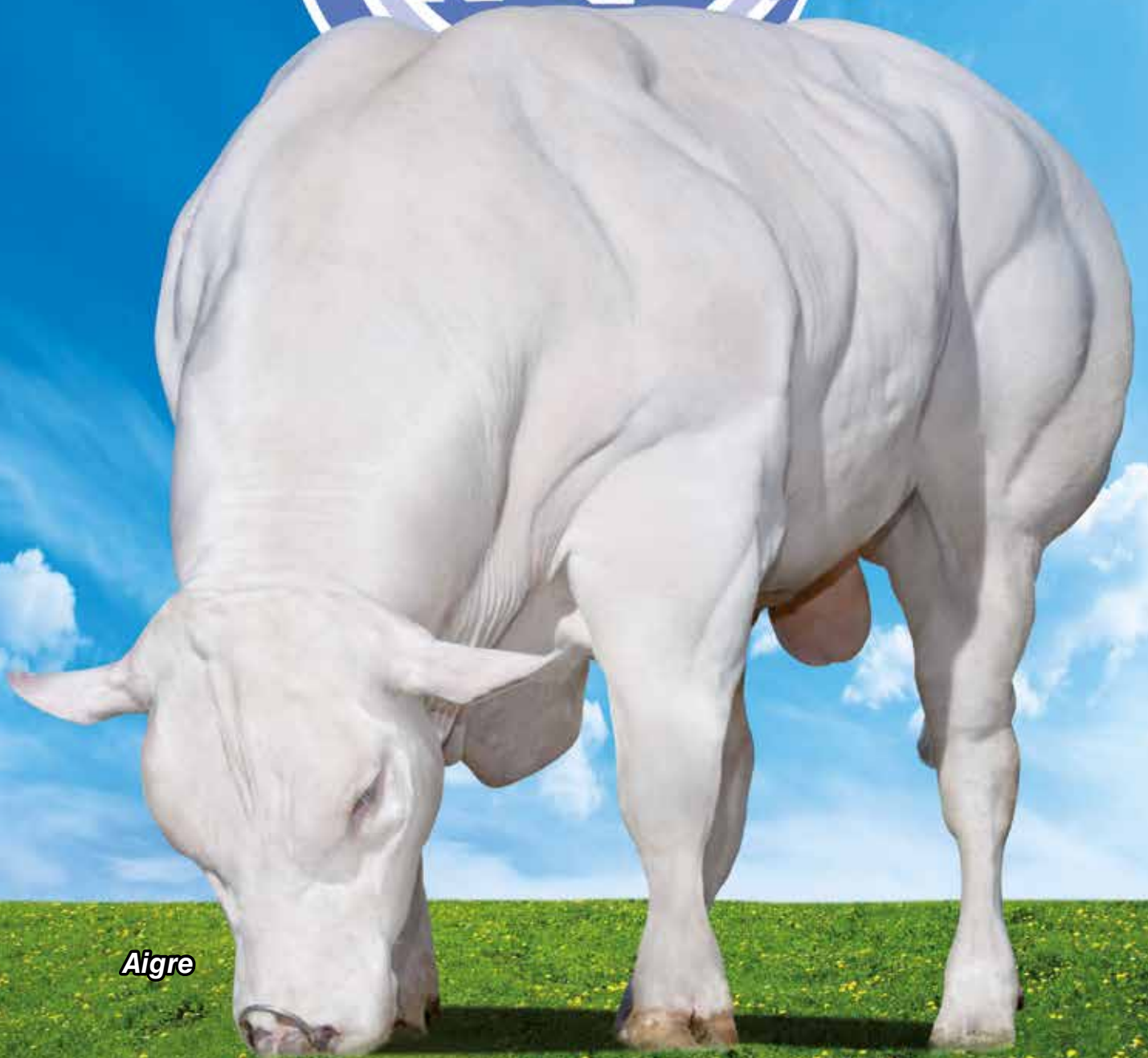


**SUPERBLU**



*Aigre*

***BEEF on DAIRY proven guarantee!***



# PHARAON

Pharaon de l'Escaille

BE000456528247

Born 01.28.2016

Ilot x Gamin



Small calves at birth with good development in the first 2-3 weeks. Ideal for crossing on Holstein because of short gestation and good semen fertility.



**Excellent  
conception  
rate**



**Super  
calving  
ease**



**Ideal cross  
on Holstein**

## PROGENY GENETIC INDEX

Nr. Calves Nr. Herds	Sire conception rate	Gestation length	Weight at Birth	Value live-weight	Value per kg
<b>847 536</b>	<b>107</b>	<b>101</b>	<b>107</b>	<b>98</b>	<b>103</b>

## BULL LINEAR SCORE

Size	Muscularity	Beef type	Feet & legs	General appearance	Final score
<b>83</b>	<b>85</b>	<b>79</b>	<b>86</b>	<b>70</b>	<b>84</b>



# NUCLEON

Nucleon du Bois d'Auge

BE000857384081

Born 04.19.2013

Attribute x Paysan



Highly recommended on Holstein because of his good semen fertility.



**High  
reliability  
bull**



**High  
conception**



**Mostly  
white  
calves**

## PROGENY GENETIC INDEX

Nr. Calves Nr. Herds	Sire conception rate	Gestation length	Weight at Birth	Value live-weight	Value per kg
<b>1046 580</b>	<b>102</b>	<b>86</b>	<b>102</b>	<b>94</b>	<b>96</b>

## BULL LINEAR SCORE

Size	Muscularity	Beef type	Feet & legs	General appearance	Final score
<b>85</b>	<b>87</b>	<b>85</b>	<b>65</b>	<b>70</b>	<b>86</b>

# SUPERBLU THE BEST PROVEN BULL FOR BEEF ON DAIRY!



## HARRICO

Harrico De Boulogne

BE000558980302  
Born 02.19.2017  
Ecusson x Guide



Best bull for calves value. Is a leader in the breed for Kg value and Total Market value.



Great calves value



Excellent muscling



Great final value

### PROGENY GENETIC INDEX

Nr. Calves Nr. Herds	Sire conception rate	Gestation length	Weight at Birth	Value live-weight	Value per kg
41 33	101	101	96	117	116

### BULL LINEAR SCORE

Size	Muscularity	Beef type	Feet & legs	General appearance	Final score
83	88	81	94	75	87



## SPHINX

Sphinx del la Roussette

BE000751729045  
Born 10.08.2014  
Tarzan x Ebluoi



Red Carrier bull. And highly recommended on Holstein breed.



High reliability bull



Super high conception



Small calves

### PROGENY GENETIC INDEX

Nr. Calves Nr. Herds	Sire conception rate	Gestation length	Weight at Birth	Value live-weight	Value per kg
1254 768	114	102	97	102	100

### BULL LINEAR SCORE

Size	Muscularity	Beef type	Feet & legs	General appearance	Final score
75	86	79	73	70	83

**SUPERBLU FILET**  
Filet de Sorinne

BE000426893302  
Born 04.13.2010  
Cubitus x Paisant



Huge bull 1240 Kg of weight. Wide spread used and calves reach high market values.



**Small calves at birth**



**Fast growing**



**Mostly white calves**

**PROGENY GENETIC INDEX**

Nr. Calves Nr. Herds	Sire conception rate	Gestation length	Weight at Birth	Value live-weight	Value per kg
<b>1668 835</b>	<b>94</b>	<b>103</b>	<b>91</b>	<b>107</b>	<b>100</b>

**BULL LINEAR SCORE**

Size	Muscularity	Beef type	Feet & legs	General appearance	Final score
<b>76</b>	<b>85</b>	<b>79</b>	<b>83</b>	<b>72</b>	<b>82</b>

**SUPERBLU MANIVEAU**  
Maniveau du Bronheit

BE000051780834  
Born 09.29.2014  
Benhur x Harrison



This bull has grey hair. Tall and massive. His calves bring high values on the market.



**High conception rate**



**Super short gestation**



**Good calf value**

**PROGENY GENETIC INDEX**

Nr. Calves Nr. Herds	Sire conception rate	Gestation length	Weight at Birth	Value live-weight	Value per kg
<b>937 585</b>	<b>108</b>	<b>117</b>	<b>103</b>	<b>105</b>	<b>102</b>

**BULL LINEAR SCORE**

Size	Muscularity	Beef type	Feet & legs	General appearance	Final score
<b>78</b>	<b>88</b>	<b>85</b>	<b>80</b>	<b>80</b>	<b>87</b>



*Vitello da incrocio con tori Superblu*



*Manze da incrocio con tori Superblu*

## **SUPERBLU**

*is a unique breeding program that guarantee great value in each single semen unit.*

- **SuperBlu bulls tested on different dairy breeds: Holstein BrownSwiss Fleckvieh and AlpinGrey**
- **SuperBlu Bulls are highly selected in Belgian purebred herds**
- **SuperBlu Progeny test 6-8 new bulls every year with high health standars**
- **Raw values are collected from the breeding association in farms and at the auction sale**
- **Indexes are perform from Padova University using a "Sire Model"**



**Clienti sodisfatti con gli incroci Superblu a sinistra Martin Tröger della Kovieh e destra Fabio Colomberotto della ditta Barcon di Treviso.**

### **HOW TO READ THE GENETICS INDEX**

**All indexes are on genetic base 100 and 5 points is one Standard Deviation. When above 100 are desirable.**

- **Sire conception rate:**  
all insemination are recorded and non return is collected within 90 days.
- **Gestation length:**  
is the time between breeding and date of birth.
- **Weight at birth:**  
all calves are weight at age of the auction and compare with on farm calving records.
- **Value live-weight:**  
market value collected at time of the auction. It will include conformation and ability to grow in the first 20 days.
- **Value per kg:**  
is the hammer price on auction day.

**The most desirable bull will sire small calves at birth with good conformation that grow well and brings good value at the auction sale. On Holstein short gestation is also very desirable.**

**SUPERBLU** THE BEST PROVEN BULL FOR BEEF ON DAIRY!



**AIGRE**

Aigre de la Grande Rose

BE000858657745

Born 02.27.2017

Pommard x Joyeux



**Super easy calving**



**Short gestation**



**High calves value**

**PROGENY GENETIC INDEX**

Nr. Calves Nr. Herds	Sire conception rate	Gestation length	Weight at Birth	Value live-weight	Value per kg
<b>170</b> <b>144</b>	<b>109</b>	<b>118</b>	<b>122</b>	<b>110</b>	<b>125</b>

**BULL LINEAR SCORE**

Size	Muscularity	Beef type	Feet & legs	General appearance	Final score
<b>80</b>	<b>82</b>	<b>75</b>	<b>84</b>	<b>60</b>	<b>81</b>

**Best bull ever at SuperBlu.  
HE DOES IT ALL!  
Is winning in every trait.**



Consorzio **SUPERBROWN** di Bolzano e Trento

38121 TRENTO (Italy) - Via delle Bettine, 40 - Tel. +39.0461.657602 - Fax +39.0461.657930  
www.superbrown.it - info@superbrown.it